

Jifeline IT infrastructure

High-level overview

www.jifeline.com



Vehicle Communication

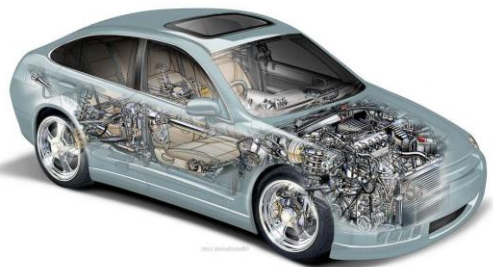
Workshop side

JNW infrastructure

Diagnostic helpdesk side



Jifeline* Remote interface



Pass-through server



'Local' interface



(OEM) Diagnostic tools



Diagnostic specialist

*) Can be branded



Workshop / remote technician communication

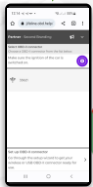
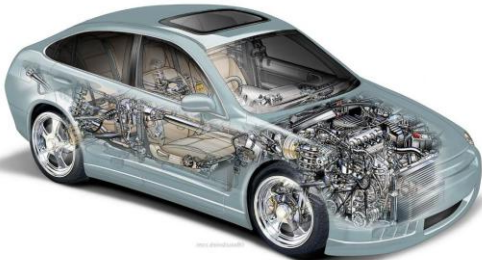
Workshop side

JNW infrastructure

Diagnostic helpdesk side

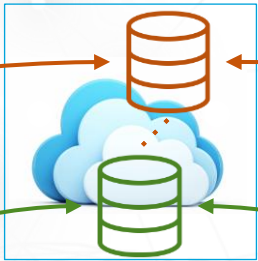


Jifeline* Remote interface



Jifeline customer web-portal (internet browser)

Pass-through server

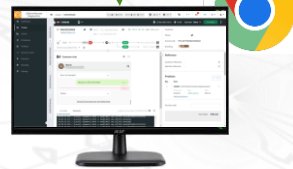


Business logic server

'Local' interface



(OEM) Diagnostic tools



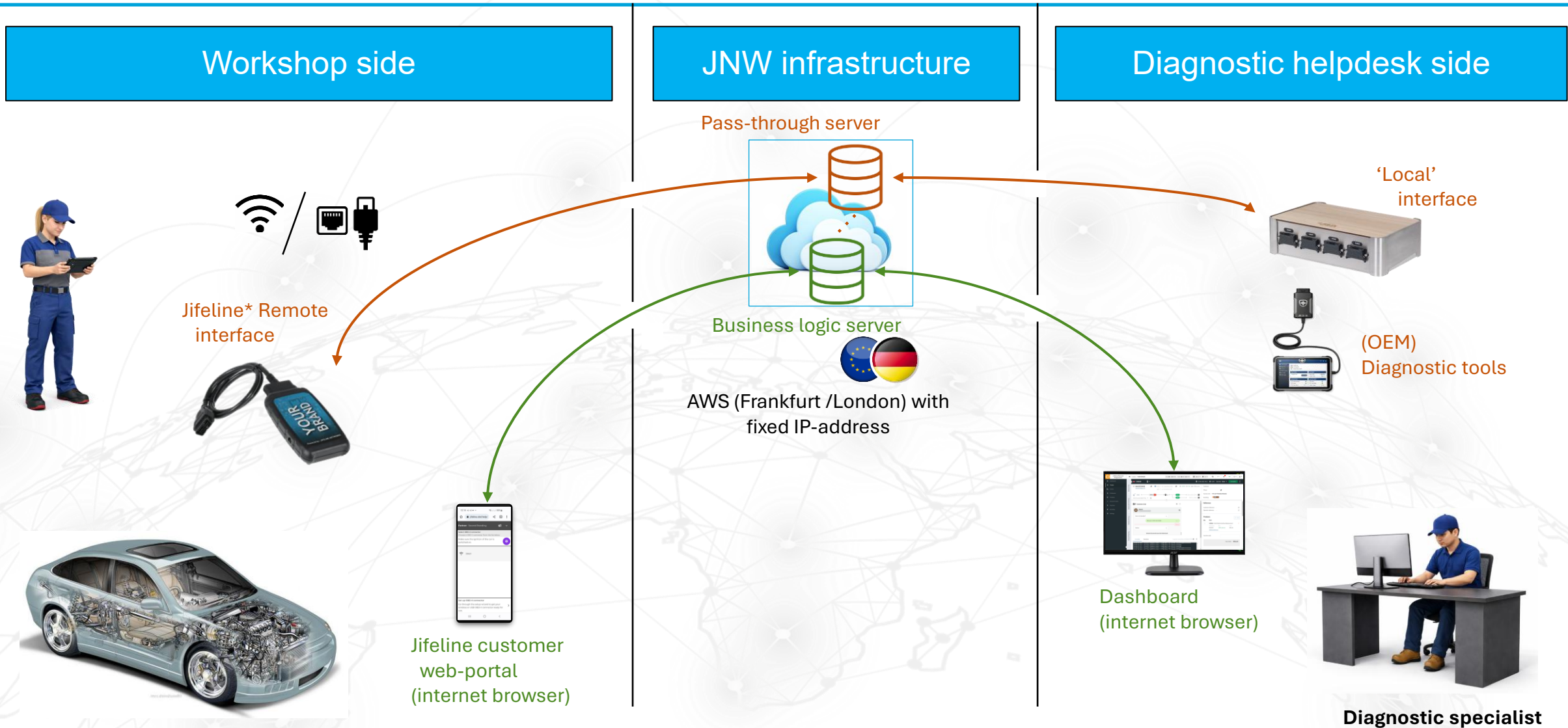
Dashboard (internet browser)



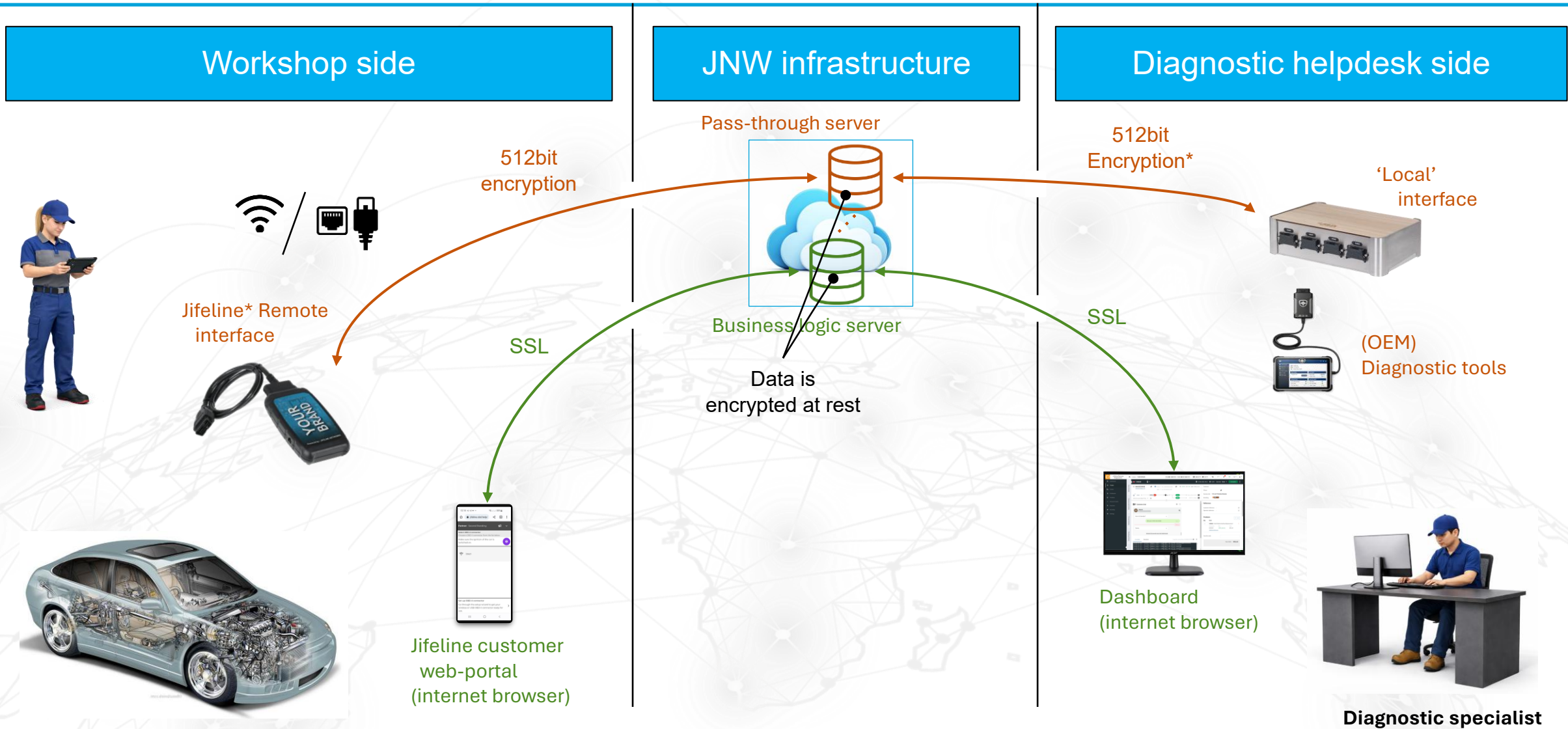
Diagnostic specialist



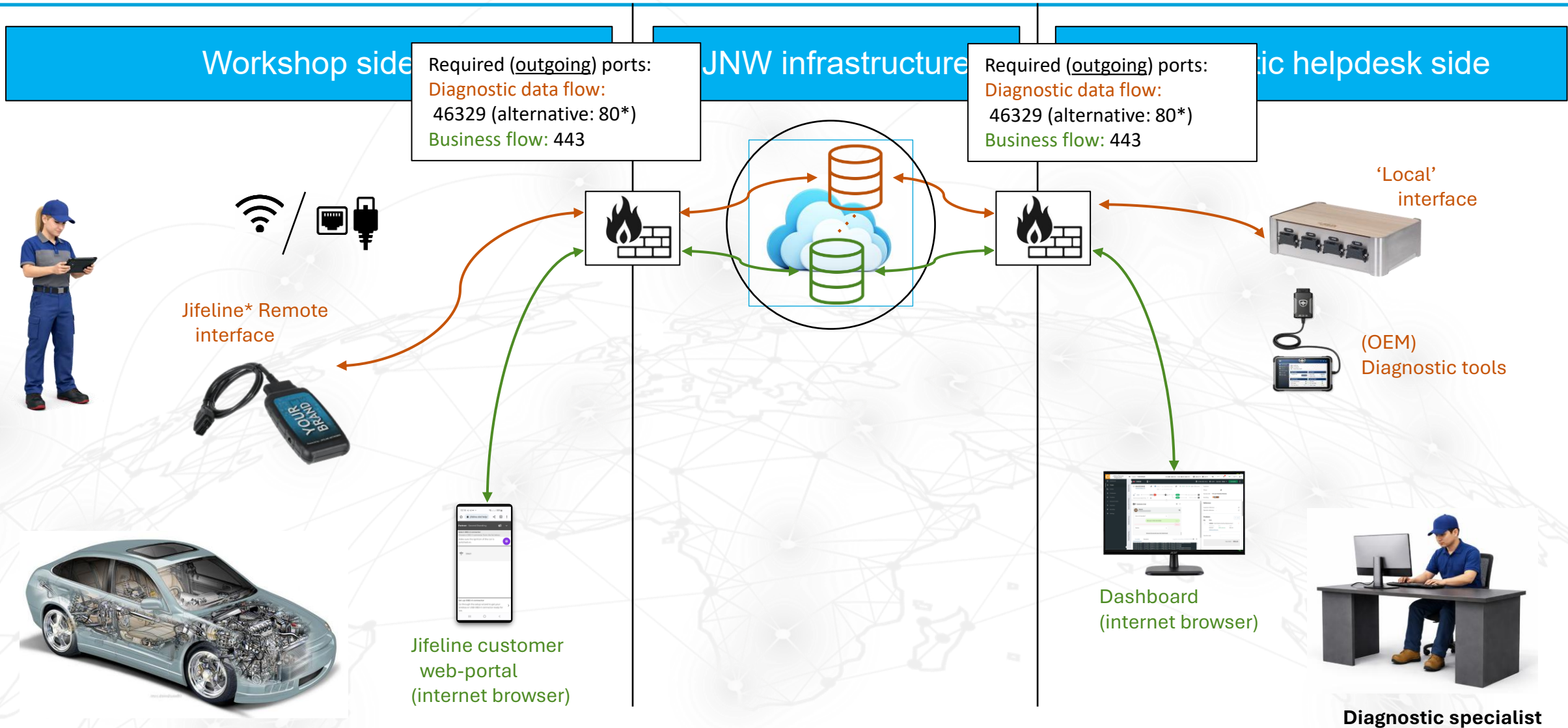
Both servers are in AWS datawarehouses



Encryption



Firewall / port settings



*) If port 46329 is blocked, the system will try port 80

